



Triveni Enterprises

Steel • Power • Services



India's **1st** Concept

STEEL SUPER STORE

India's **1st** Integrated

STEEL SERVICE CENTRE

Pioneers in

READY-TO-FIX TMT

The Company - A Strong Presence,

40 years of Partnership for Innovation

The vision was clear from inception: The business sought to make a difference by thinking out-of-the-box, and adding value to its chosen line of service, through meaningful innovation. Driven by this mission, the enterprise founded by **Late Shri Omprakash Agarwal**, began its journey towards excellence 40 years ago. With an ambition and a burning desire to make a difference, gave rise to then, has now gathered strength and momentum to grow into a widespread business conglomerate, with a customer footprint that's truly enviable.

Triveni Enterprises, the name is now irrevocably associated with products that bring true value and reliability in professional services to businesses. A name that's touched so many lives with modernization and advancement. The one name you recognize as South India's leader and most innovative stockist of Iron and Steel. Effectively spearheaded by **Aashirwad and Avinash Agarwal**.

Leveraging Strengths... ...of Infrastructure

- ✓ **Sprawling stockyards at**
 - Bangalore (spread over 12 acres)
 - Bellary
 - Vizag
- ✓ **Equipped with state-of-the-art processing facilities,** at various locations across South India fully geared to meet your specific requirements with world class solutions, that are both timely and cost competitive.
- ✓ **In-house weigh-bridge & cranes.**
- ✓ **Dedicated fleet of trucks and trailers** to ensure delivery across the breadth and width of South India within 48 hours of receiving your request.

Our own fleet of trucks & trailers



Our Vision

To create a business model which perpetuate for generations to come.



Stockyard Office



60 MT Weigh Bridge



Our Fleet of cranes & material handling

Wide Variety & Large Representation

...and Range

As a company constantly striving to present world-class tailor-made products for customers, to meet all your precision and unique individual needs, Triveni Enterprises has a growing repertoire of offerings that encompass brands like

- **SAIL** - Authorised district dealer
- **RINL** - Long term contract
- **JINDAL** ● **BHUSHAN**
- **ESSAR** ● **Llyods**

and products from many reputed manufacturers.

M S Plates	5 mm to 150 mm
H R Sheets	1.2 mm to 4.8 mm
C R Sheets	0.30 mm to 3.15 mm
Angles	20 x 20 x 3 to 200 x 200 x 20

Channel	75 x 40 to 400 x 100
Joist (Beams)	100 x 50 to 600 x 210
M S Rounds	6 mm to 125 mm
TMT/CTD/TOR	6 mm to 40 mm

Advantages of Steel Super Store:

- ✓ All varieties in ready stock
- ✓ Single supply source with an exhaustive inventory
- ✓ Hassle free transaction
- ✓ Labour ready-to-deploy
- ✓ Supply to project site, on demand
- ✓ Crane facility for quick loading of vehicles available to choose from trucks, trailers and LCV
- ✓ Test Certificate & CENVAT is issued with every consignment
- ✓ In-house Steel Service guarantees specific cut-to-size material without wastage.

Our Mission

To truly leverage the strengths of our infrastructure and network to build a business that seeks a clear focus on customer delight, and just not deliver; but catering the market effectively and efficiently.



Stock of Angles



International quality product of JSPL - Ismb 600



View of stocks/inventory

India's First Integrated Steel Service Centre



At Triveni we believe in the future. Steel around the world is sold through Steel Processing Houses or Steel Service Centres. We have imported machines for precision cutting and provide plate profile cutting, slitting and precision levelling facilities to serve our clients.

Triveni Enterprises started India's first Steel Service Centre at Bangalore, spread across an area of 40,000sq.ft.

Triveni Enterprises brings to its clients' state-of-art technology in steel in processing and finishing under one roof.



CNC Profile Cutting Machine

Slitting Machine

An inner - overview of our steel service centre

A view from the outside (Total 1,00,000 sft)

Precision Levelling Machine

- In One Location

Services Offered

Precision Levelling

The Precision leveller with international standard precision has a capacity to level coil / sheets ranging from 0.3 mm to 2 mm thickness with automatic length measuring and accuracy of +/- 0.5mm with Coil width of 150mm to 1500mm relieving the stress out of the sheet and giving 100% flatness suitable for CNC and turret punch.

This machine can cut and stack material into pallets in a fully mechanized stacking machine with an option of separating defective sheets/coil ends and good sheets. Triveni would be able to give materials packed into specific quantities & sizes as per customer's requirement.



Cut-to-length Line in process

Cut-to-length Line

We offer traditional Cut-to-length facility ranging from 0.3mm to 20mm with high precision at low value addition. These machines are designed for all Mild Steel H.R. / C.R. Coils.

Heavy Gauge

Thickness range : 3mm to 20mm

Width : 1800mm

PLC length control : +/- 2.5mm accuracy

Diagonal accuracy: 1mm

Light Gauge

Thickness range : 0.5mm to 3mm

Width : 1800mm

PLC length control : +/- 1mm accuracy

Diagonal accuracy: 0.5mm

Stacking line } As per client
Maximum length } requirement

Overview of Slitting Line Machine



Slitting Line

This is the most modern slitting line owned in the private sector which can cater to specific requirements of automotive and precision jobs. The range of slitting coils can be from 0.35 mm to 6.35 mm in thickness and intake coil width of 1580 mm to any slit width.

The machine has a capacity of 25 tons coil input and output of 25 tons, to prevent stoppage in production and to prevent damage to material.

The dust free environment ensures clean scratch free material. Well experienced team handling the machines and material to ensure best service.

TMT Straightening Machine

TMT coils of 6 mm, 10 mm and 12 mm can be cut to specific lengths or standard lengths.

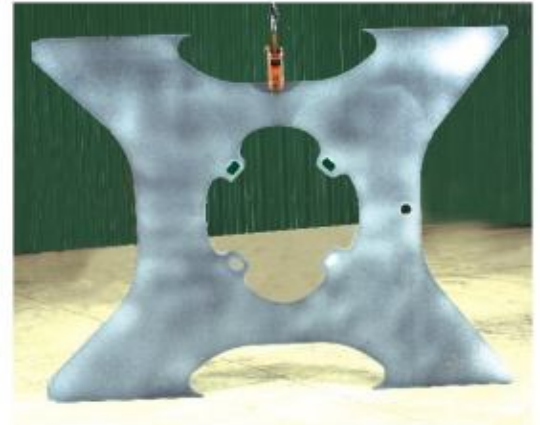
We have also been awarded the Contract for Decoiling to TMT Coil bars of **STEEL AUTHORITY OF INDIA (SAIL)** at their stockyard located at Cheemasandra. The capacity for the same is 1500 MT per month.

Steel Service Centre With Multi-facilities

Shot Blasting



Before Shot Blasting



After Shot Blasting

Environment friendly measures are followed for Shot Blasting. The facility includes a cabin size of 3mtrs x 10mtrs, capable of handling plates, components & fabricated structures. Crane & Trolley has a capacity of 2mtrs for quicker turn around. Shot-Blasting is done for de-scaling & pre-painting preparations.

Quality finish can be offered as per Customer requirements, using Steel Shots or Cast Iron Grids.



Bevelling

The company undertakes edge preparation for improved weld finish, using gas-cutting & machining as per customer specifications.

The infrastructure includes, a state-of-the-art machine supplied by Koekye (Japan), Xingzu (Sweden) & Pull Max by Sweden.

Milled finish can also be provided from thickness ranging from 8mm-40mm and angels from 10deg-70deg and maximum length of 1.2mtrs

The Special Purpose Machine (SPM) is supplied by Hataly (Japan).

Milling Machine

HMT EH-4 Conventional machine for both perfect edge preparation and surface preparation.

Maximum bed size of 1.2mtr x 0.8 mtr.



CNC Co-ordinate Drilling Machine:

CNC operated Co-ordinate Drilling Machine is available for multiple applications of drilling and tapping. The Machine can be programmed as per customer requirements, from thickness ranging from 8mm to 40mm.

Max bed size of 900mm x 1800mm.

A well trained dedicated team of operators handle any kind of job providing accuracy in specified microns.



CNC Profile Cutting

Precision Perfect Delivery

Triveni's Oxy-fuel and Plasma CNC profile cutting line is completely geared to meet the rigors of your project and service requests. It is equipped with a bed width of 3.5 meters and length of 16 meters. It is also fully capable of handling all sizes of plates manufactured in India. This highly precise machine can cut M.S. Plates of all thickness with an accuracy of +/- 1 mm.

This state-of-the-art machine is equipped with software to optimize the use of steel and reduce wastage to a bare minimum.

Triveni's in-house team is experienced in handling the software & can also convert your drawings submitted to us in hard copy into an Autocad output. Jobs can be taken up on turnkey basis or job work.

Triveni also offers profiled material to its clients, helping your project to reduce wastage and increase productivity, significantly.



L&T Komatsu PC200 boom kit

Key Advantages

The advantages that this brings to the business are multi-fold and include:

- ◆ Ability to cut 6 mm to 150 mm
- ◆ Double cutting torches to increase productivity
- ◆ Nesting software to reduce wastage and optimize the use of material
- ◆ CNC operation for maximum accuracy
- ◆ Reduced down time on factory shop floor
- ◆ Team ready for 24 hrs operation
- ◆ State-of-the-art infrastructure facility
- ◆ Just in time delivery

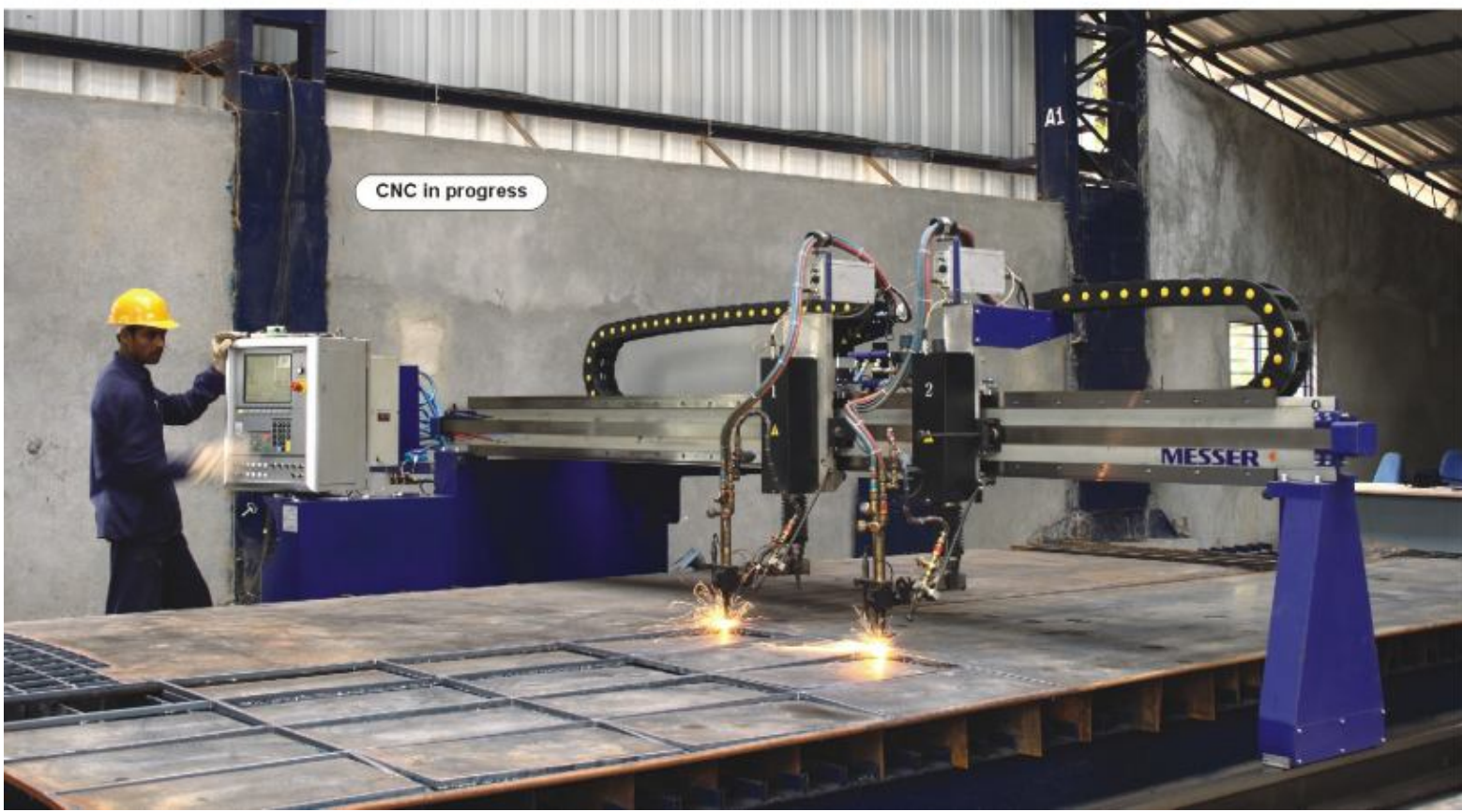


Automotive profile

Shapes and sizes
can be cut as per
customer specification



Ready availability of steel is an added advantage of buying from Triveni Enterprises



CNC in progress

READY-TO-FIX TMT STEEL (RFT)



Ready-to-Fix TMT Steel

Triveni Enterprises, brings you the first coil-fed Automatic Stirrup Bender "RFT TMT Steel"

The construction industry is one of the most rapidly evolving industries in India. Newer and more efficient methods are constantly being deployed by forward minded organizations.

Cost and time-efficient innovative construction methods are pushing companies to turn a greater degree of mechanization and automation.

Concrete needs to be reinforced with steel bars. Based on the shape and size of the structure these rods would be of different lengths and bent into different shapes. Until recently these operations were being done manually at sites. The largest steel component of construction is reinforcement steel bars. These have to be cut and bent to the required shape before usage.

Construction companies used to do this with the help of small cutting and bending machines at site. Triveni Enterprises has set up a state of art of Cut and Bend machine to cater this market.



The TMT bar fabrication facility is predominantly done at Triveni. The factory is well equipped to do so in a consistently accurate manner. It is done by a defined set of quality management criteria to ensure the accuracy of cutting and bending operations in order to achieve proper fit at site, and to maintain the required technical parameters defined by the clients.



READY-TO-FIX TMT STEEL (RFT)

Benefits

to the Clients, Builders, Contractors & Sub-Contractors
of Automatic Cut to Size and Bend TMT Bars

Save your Steel

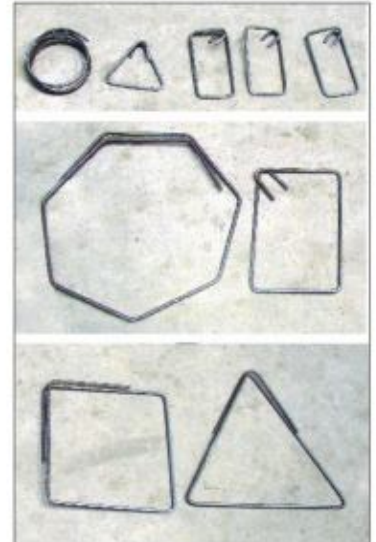
TMT bars are in coil form obtained from the mills of SAIL / RINL / TATA in the size range of 8mm, 10 mm & 12 mm conforming to IS Standard 1786:1985.

Any Shape & Size

Fully automatic, hydraulic machine, for the production of small and large size Stirrups, Rings and any shape as per Bar Bending Schedule (BBS).

Zero Wastage

- Wastages are minimum as RFT TMT stirrups are produced by Machine.
- Pilferages are minimum.
- No fear of losses at site as quantity to be used is predetermined and delivered accordingly at site.



Minimize Labour Costs

- Reduction in construction time as the stirrups will be supplied as per BBS schedule.
- Reduction of Skilled & Un-Skilled Manpower at site.
- Less Supervision.
- Minimum cost in production of stirrups of all standard sizes.
- Greater accuracy and multiply production due to machine-process.
- Minimize regular hazards of attendance of labour at site which hampers construction time.

Minimize Storage Hazards

- No storage at site.
- Easy identification through proper Binding and Tagged for convenience.
- Efficient use of limited space at congested sites.

TMT Bars are available in the following sections

SIZE	AREA	WT.	LENGTH	SIZE	AREA	WT.	LENGTH	SIZE	AREA	WT.	LENGTH
mm	cm ²	kg/m	M/ton	mm	cm ²	kg/m	M/ton	mm	cm ²	kg/m	M/ton
6	0.283	0.222	4510	16	2.011	1.578	633	28	6.157	4.83	207
8	0.503	0.395	2532	18	2.545	2	500	32	8.042	6.313	159
10	0.785	0.617	1621	20	3.142	2.466	405	36	10.18	7.99	125
12	1.131	0.888	1125	22	3.801	2.98	336	40	12.57	9.864	101
14	1.539	1.208	829	25	4.909	3.854	260	50	19.63	15.41	65

Section Weight Chart

M.S. Equal Angles		Thickness(mm)					Weight (kg/m)				
Size mm	3	4	5	6	8	10	12	16	18	20	25
20 x 20	0.9	1.1									
25 x 25	1.1	1.4	1.8	2.2							
30 x 30	1.4	1.8	2.2	2.8							
35 x 35	1.6	2.1	2.6	3.0							
40 x 40	1.8	2.4	3.0	3.5							
45 x 45	2.1	2.7	3.4	4.0							
50 x 50	2.3	3.0	3.8	4.5							
65 x 65			4.9	5.8	7.7	9.4					
75 x 75			5.7	6.8	8.9	11.0					
80 x 80				7.3	9.6	11.8	14.0				
90 x 90				8.2	10.8	13.4	15.8				
100 x 100				9.2	12.1	14.9	17.7				
110 x 110					13.4	16.5	19.6	24.2			
130 x 130					15.9	19.7	23.4	28.9			
150 x 150						22.8	27.2	35.8	39.9	44.1	
200 x 200							36.6	48.5	54.0	60.0	73.6

M.S. Flats		Thickness(mm)					Weight (kg/m)				
Size mm	3	5	6	8	10	12	16	18	20	22	25
16		0.6	0.8	1.0	1.3	1.5	2.0	2.3	2.5	2.8	3.1
20	0.47	0.8	0.9	1.3	1.6	1.9	2.5	2.8	3.1	3.5	3.9
25	0.6	1.0	1.2	1.6	2.0	2.4	3.1	3.5	3.9	4.3	4.9
32	0.8	1.3	1.5	2.0	2.4	3.0	4.0	4.5	5.0	5.5	6.3
35			1.6		2.8						
40	0.9	1.6	1.9	2.5	3.1	3.8	5.0	5.7	6.3	6.9	7.8
45			2.1		3.5	4.2					
50	1.2	2.0	2.4	3.1	3.9	4.7	6.3	7.1	7.8	8.6	9.8
63		2.5	3.0	4.0	4.9	5.9	7.9	8.9	9.9	10.9	12.4
65				4.1	5.1	6.1			10.2		
75			3.5	4.7	5.9	7.1	9.4	10.6	11.8	12.9	14.7
80		3.1	3.8	5.0	6.3	7.5	10.0	11.3	12.6	13.8	15.7
100		3.9	4.7	6.3	7.8	9.4	12.6	14.0	15.7	17.5	19.6
125		4.9	5.9	7.8	9.8	11.8	15.7	17.7	19.6	21.6	25.5
150					11.8	14.1		18.8	23.6		29.4
160		6.3	7.5	10.0	12.6	15.1	20.1	22.6	25.1	27.6	31.4
180						17.0	22.6	25.4	28.3		
200		7.8	9.4	12.6	15.7	18.8	25.1	28.3	31.4	34.5	39.2
250		9.8	11.3	15.7	19.6	23.6	31.4	35.3	39.2	43.2	49.1

M S Plates	
Thickness mm	Weight kg/sq.m
5	39.25
6	47.10
8	62.80
10	78.50
12	94.20
14	109.90
16	125.60
18	141.30
20	157.00
22	172.70
25	196.25
28	219.80
32	251.20
36	282.60
40	314.00
45	353.20
50	392.50
56	439.60
63	494.50
71	557.40
80	628.00

M.S. Squares, Rounds, Tor / TMT							
Size mm	Weight kg/m			Size mm	Weight kg/m		
	Squares	Rounds	TMT		Squares	Rounds	TMT
6	0.28	0.22	0.23	45	15.9	12.29	
8	0.50	0.39	0.39	50	19.6	15.40	
10	0.78	0.62	0.62	56	24.8	19.35	
12	1.13	0.89	0.82	63	31.1	24.57	
16	2.01	1.58	1.60	80	50.24	39.46	
18	2.54	2.00	2.00	90	63.58	49.94	
20	3.14	2.47	2.50	100	78.50	61.86	
22	3.8	3.00	3.00	110	94.91	74.60	
25	4.91	3.80	3.85	125	122.60	96.34	
28	6.2	4.80	4.83	140	153.86	120.84	
32	8.1	6.30	6.31	160	200.96	157.84	
36	10.2	8.00	8.00	180	254.34	199.76	
40	12.6	9.90	9.90	200	324.00	244.62	

Specification	Application
IS 2062/1999 (Grades A, B,C), ASTM-A36M M, DIN 17100, IS 1977/1996	General structurals
IS 5986/1992, Fe 330,360,410,510	Flanging and forming operations
IRS M-41, SAILCOR, ASTM-A-588 M IS 2062 with copper	Atmospheric corrosion resistance
SAIL Boiler IS2002/1992, ASTM-A-285 M (Grade C) ASTM-A-517 M, ASTM-A-516M, ASTM-A-517M (Grade F) ASTM-A-537 M (Class 1), ASTM-A-204 (Grade B), DIN 17155 (Grade H1), EN 10028, BS 1501	Boilers and pressure vessels
ATSM-A-517 (Grade F)	Peristock and high degree of abrasion resistance applications.
SAIL HARD	Abrasion Resistant
SAILMA 300, 350, 410, 450 IS: 85001/1992, DIN 17100 52.3 IS: 5986/1992, Fe510	High Tensile
Sail Marine IS 3039, Llyods Grade A,B ABS Grade A, NCD 1431	Ship Building
API 5L, Grade A, B, x42, X 46, X52, X56, X60, X65	Oil and gas pipeline manufacturing
Chequered Plates conforming to IS : 3502/1994*	Industrial Flooring
Dead Soft Quality	Galvanising Pots
BSK-46, E34, E38, SAPH 440	Fabrication of long members in auto sector

* Base material as per IS 2062/1999 and IS 1977/1996

R S Joists (Beams)	
Size mm	Wt. in kg/m
100 x 50	8.34
125 x 70	13.20
150 x 75	15.00
200 x 100	25.40
225 x 110	31.30
250 x 125	37.30
300 x 140	46.10
350 x 140	52.40
400 x 140	61.50
450 x 150	72.40
500 x 180	86.90
600 x 210	123.00

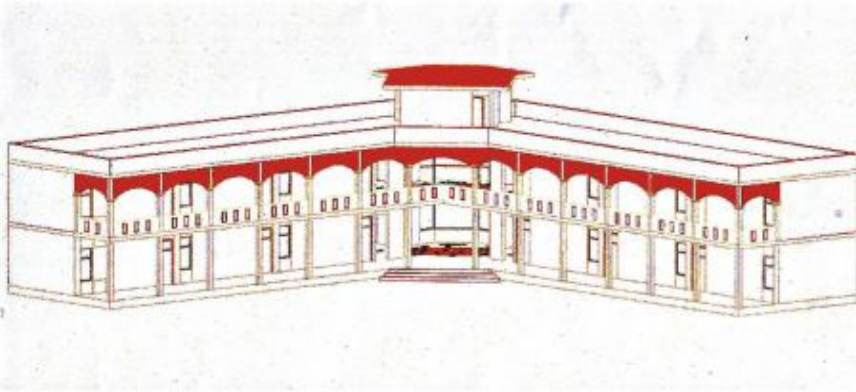
M.S. Chequered Plates	
Size mm	Wt. in kg/m
5	43.50
6	52.30
7	61.10
10	84.60
12	100.60

M S Channels	
Size mm	Wt. in kg/m
75 x 40	7.14
100 x 50	9.56
125 x 65	13.10
150 x 75	16.80
175 x 75	19.60
200 x 75	22.30
200 x 75	24.20
250 x 82	34.20
300 x 90	36.30
400 x 100	50.10

CR / HR Sheets		
Guage	Thickness mm	Weight kg/sq.m
8	4	31.40
9	3.55	27.90
10	3.15	24.75
11	2.80	22.00
12	2.50	19.00
13	2.25	17.60
14	2.00	15.70
15	1.80	14.15
16	1.60	12.55
17	1.40	11.00
18	1.25	9.80
19	1.12	8.80
20	1.00	7.85
21	0.90	7.05
22	0.80	6.30
24	0.63	4.95
26	0.50	3.90
28	0.40	3.15

Exploring Other Avenues

Evolved Social Corporate Responsibility



Triveni Enterprises believes in investing significant energies in developing those sections of the society, populated by the underprivileged. Education and knowledge empowerment is a cause that is dear to the enterprise.

Among other initiatives, Triveni has undertaken the development of a Govt. run school in Haryana which built at the birth place of Mr. O.P. Agarwal, Founder of Triveni Enterprises. Offering support to set up infrastructure in the school to facilitate

tutoring of classes 8 to 12 std., Triveni has helped the institution run a more efficient and comprehensive schooling system.

The company in association with Round Table, has also supported significantly in a school for the underprivileged in Bangalore as well. The scope of initiative undertaken includes provision of various requirements for school. These activities are spearheaded by Mrs. Suchita Agarwal, along with Ashirwad, who heads the CSR agenda of Triveni Enterprises.

Green Power

In an increasingly green-conscious world, the Triveni Group has committed itself to strongly express its corporate social responsibility through generation of eco-friendly power.

To meet the increasing demand for power, the Group has diversified into wind power generation. The Triveni Group has set up:

- 1.25 Mega Watt **Suzlon** Make Wind Turbine at Kappatgudda in Gadag District - Karnataka.
- A powerful **Enercon** 0.8 MW wind power generator at Chikhalli in Karnataka.



Triveni's Commercial Building Projects



Triveni @ Magrath

Next to Garuda Mall,
On Magrath Road
(off. Brigade Road), Bangalore

Our tremendous trust in the strength and reliability of our steel has led us on a journey to inventiveness in the construction space.

We are among the pioneers to give Bangalore its **"First all Steel Building"** - an interesting innovation that promises to set a trend in the industry.

Triveni @ Rammurthy Nagar

A commercial complex





Triveni Enterprises

Triveni Movers Pvt. Ltd

Head Office: No. 22, Sampurna - 9, 1st Cross, CSI Compound, Lalbagh Road, Behind Unity Building, Bangalore - 560 027. Ph: 080 41112121 / 41419000 Fax: 080 41419099

Stock Yard & Service Centres:

No. 112, Cheemasandra Village, Budigere Cross, Old Madras Road, **BANGALORE** - 560 049.

e-mail: info@trivenisteel.com Website: www.trivenisteel.com

Branches at: • BELLARY • BELGAUM • MYSORE • HOSUR • VISAKHAPATNAM • KOCHI